

Multidisciplinary Cancer Centers

Brain Tumor | Thoracic/Aerodigestive | Liver Tumor | Metastatic Uveal Melanoma | Senior Adult Oncology | Genitourinary Oncology | Small Renal Mass

Message from the Clinical Director



It is with great pleasure that I share with you information about our Multidisciplinary Cancer Centers at the Kimmel Cancer Center. I am also pleased to announce the newest members to our multidisciplinary centers.

Jean Hoffman-Censits, MD, is the newly appointed director of the Genitourinary Oncology Center. Dr. Hoffman-Censits is an Assistant Professor of Medical Oncology. Dr. Hoffman-Censits has particular expertise in the area of chemotherapy and the latest systemic treatment for prostate, bladder and kidney cancer.

Mark Hurwitz, MD, is the Vice-Chair in the Department of Radiation Oncology. Dr. Hurwitz is the newest member to our Genitourinary Oncology Center. Dr. Hurwitz is a widely recognized leader in the field of genitourinary oncology.

Jesse Civan, MD, has been named the new Medical Director of Jefferson's Liver Tumor Center. Dr. Civan completed fellowships in gastroenterology and hepatology and transplant hepatology at Thomas Jefferson University Hospital, and is board certified by the American Board of Internal Medicine in gastroenterology and hepatology.

I want to send every team member of our Multidisciplinary Centers a THANK YOU for your hard work and efforts in providing excellent patient care.

Leonard Gomella, MD

Chairman, Urology

Clinical Director, Jefferson Kimmel Cancer Center Network

Associate Director, Clinical Affairs

Multidisciplinary Brain Tumor Center



David Andrews, MD
Professor and Vice Chairman,
Neurosurgery, Co- Director,
Brain Tumor Center



Wenyin Shi, MD
Assistant Professor,
Radiation Oncology
Co-Director, Brain
Tumor Center

The Jefferson Brain Tumor Center of the Kimmel Cancer Center provides a multidisciplinary approach to treating brain tumors, giving patients access to care all in one place and during one

visit. Combining expertise in radiation oncology, neurosurgery and medical oncology, our physicians provide exceptional care and access to the latest protocols and clinical trials for patients coping with this life-threatening diagnosis.

Our Brain Tumor Center distinguishes itself in many ways:

- The volume of patients we have treated (more than 3,000)
- Our team of experts performs more than 600 surgeries annually, making Jefferson one of the busiest brain tumor practices in the tri-state area.
- Our surgical approaches and radiosurgery techniques yield an overall volume that is unrivaled in the tri-state area.
- We have the largest number of neurosurgeons, neuro-oncologists and radiation oncologists dedicated to treating brain tumors of any center within a 100-mile radius.

Thoracic/Aerodigestive Cancer Center



Maria Werner-Wasik, MD
Professor, Radiation Oncology,
Co-Director, Thoracic/
Aerodigestive Cancer Center

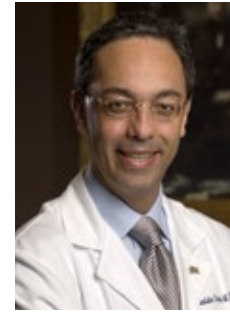


Rita Axelrod, MD
Professor, Medical Oncology,
Co-Director, Thoracic/
Aerodigestive Cancer Center

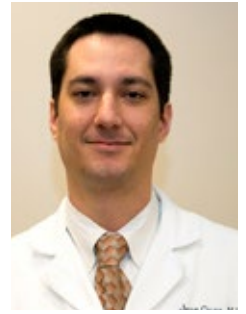
This program brings together Jefferson specialists with extensive expertise in treating lung cancer to provide each patient with a personalized treatment plan.

Through a collaborative, multidisciplinary approach, patients are evaluated during their initial consultation by specialists, and depending on a patient's needs, may include a thoracic surgeon, radiation oncologist, medical oncologist, pulmonologist, nurse and a clinical research associate. Each patient's case is reviewed individually prior to clinic during our multidisciplinary conference; thoracic surgeons, radiation oncologists, medical oncologists, chest pathologist and chest radiologist are present during the conference.

Liver Tumor Center



Cataldo Doria, MD, PhD
Professor, Surgery
Division Director, Transplant
Surgery, Surgical Director,
Liver Tumor Center



Jesse Civan, MD
Assistant Professor,
Gastroenterology and
Hepatology, Medical
Director, Liver Tumor Center

Jefferson has been at the forefront of treating liver diseases for more than 30 years. Our comprehensive Liver Tumor Center is a multidisciplinary collaboration of hepatologists, interventional radiologists, surgeons, medical and radiation oncologists. Each patient's case is discussed extensively at our weekly liver tumor conference.

Our distinguished specialists work together to provide patients with a thorough and coordinated one-day comprehensive evaluation.

Genitourinary Oncology Center



Jean Hoffman-Censits, MD
Assistant Professor,
Medical Oncology
Director, Genitourinary
Oncology Center



Edouard Trabulsi, MD, FACS
Associate Professor,
Urology Co-Director,
Genitourinary Oncology
Center

Metastatic Uveal Melanoma Program



Takami Sato, MD, PhD
Professor, Medical Oncology
Director, Metastatic Uveal
Melanoma Program

David Eschelmann, MD
Associate Professor,
Interventional Radiology,
Co-Director, Metastatic
Uveal Melanoma Program

Carin Gonsalves, MD
Associate Professor,
Interventional Radiology,
Co-Director, Metastatic
Uveal Melanoma Program

The incidence of ocular, or uveal, melanoma is very low – about six cases per one million Americans – but the chances are good that patients with advanced stages of the disease will seek treatment at Jefferson. Jefferson has become a national referral center for patients whose ocular cancer has metastasized; in fact two-thirds of our patients with the disease travel from outside of the tri-state area.

Our multidisciplinary approach allows our patients to meet with the medical oncologist, interventional radiologist and radiation oncologist in one visit.

Genitourinary Oncology Center *continued*



Robert Den, MD
Assistant Professor,
Radiation Oncology
Co-Director, Genitourinary
Oncology Center

Jefferson Kimmel Cancer Center provides a multidisciplinary approach to patients diagnosed with genitourinary (GU) cancers. Patients will be seen by a urologic surgeon, radiation oncologist and a medical oncologist with

genitourinary malignancies expertise. Patients who are referred to the cancer center with an established cancer diagnosis will have their biopsy slides reviewed by a reviewed by a Jefferson pathologist.

Patient appointment, record collection and treatment plan is coordinated through our designated GU cancer care coordinator.

We see approximately 375 new patients per year in our Genitourinary Oncology Center, ranging from diagnoses of prostate, bladder and kidney cancer.

The GU Team



Senior Adult Oncology



Andrew Chapman, DO
Clinical Associate Professor,
Medical Oncology
Director, Division of Regional
Cancer Care, Co-Director,
Senior Adult Oncology Center



Christine Arenson, MD
Professor and Interim Chair,
Family and Community
Medicine, Co-Director,
Senior Adult Oncology
Center

The Senior Adult Oncology Center is the region's only geriatric oncology multidisciplinary program. A joint effort between Medical Oncology and Family and Community Medicine, our clinic provides a two-hour consultative only appointment that provides a comprehensive assessment to identify problems related to aging and cancer. We will share the treatment plan with the primary care physician and/or oncologist. A patient navigator coordinates the team and helps navigate the patients through the assessment and serves as a point of contact during follow-up.

We offer services at both our Center City and Methodist location.

- To date we have seen over 200 patients
- Average age 80.7 years
- Top 3 diagnoses
 - breast, colorectal, lung

Small Renal Mass Center



Colette Shaw, MD
Assistant Professor,
Interventional Radiology
Co-Director, Small Renal
Mass Center



Costas Lallas, MD
Associate Professor, Urology
Co-Director, Small Renal
Mass Center

As part of the Genitourinary Multidisciplinary Cancer Clinic we have now expanded the coordinated team to include a specific small renal mass evaluation and treatment program. Since its creation in 2010 we have seen approximately 175 new patients. A small renal mass is a kidney lesion that is smaller than 4 centimeters in size. Our SRM team consists of urologic oncologists and interventional radiologists, all of whom have specialized training in the latest minimally invasive approaches for the treatment of SRMs, including laparoscopic and robotic partial and radical nephrectomy, and laparoscopic and percutaneous cryotherapy, as well as the more traditional open partial nephrectomy.

Patients and their imaging are evaluated by our multidisciplinary team and treatment is individualized based on patient and tumor factors. Follow-up is also coordinated by our team throughout hospitalization and subsequent appointments.

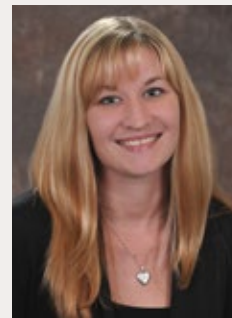
Meet Our Cancer Care Coordinators

Our cancer care coordinators serve as the main point of contact and link between the patient and the physicians. Our coordinators ensure that patients will receive the appropriate education, support and resources that are needed to individualize each patient's plan of care.

We assist with the following multidisciplinary centers: Brain, Thoracic, Liver Tumor, Uveal Melanoma, Senior Adult Oncology, Small Renal Mass and Genitourinary Oncology Center. Our cancer care coordinators also assist with new patient referrals for any type of malignancy. We also have a dedicated cancer care coordinator for head and neck cancers.

Primary Role of Cancer Care Coordinator:

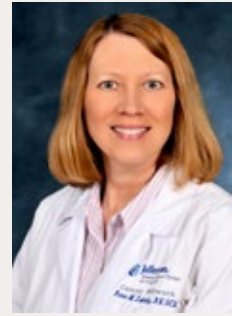
- Provide appointment
- Record retrieval
- Assist with transportation, directions and lodging
- Facilitate rapid report back to referring physicians
- Provide ongoing patient navigation



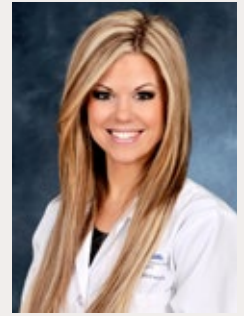
Mary-Kate Cellmer, BS
Manager of Clinical Operations

Mary-Kate Cellmer, BS oversees operations of our centers, implementation of new centers and serves as a liaison between the cancer care coordinators and our team of physicians. Ms. Cellmer may be contacted at 215-503-6740.

Cancer Care Coordinators



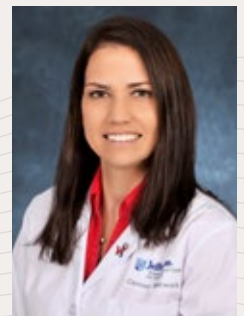
Renee Zalinsky, RN, OCN



Theresa Morsa, RN, BSN



Jillian Brown



Katherine Burns



Lisa Dunbar