

Recognition Opportunities

Establishing a Legacy of Care

We invite you to learn about the following ways in which you can be a founding supporter of this important project. A complete list of recognition opportunities can be found below, with selected opportunities outlined on pages 5-7. In recognition of any of the following leadership level gifts of \$10,000 and above, your name will be highlighted on the Benefactor Legacy Wall (*pictured right*), preserving your place in the Jefferson story for generations to come.

Campus	\$1,000,000 +	Reserved
Main Concourse	\$1,000,000	1 Available
Simulation Center	\$1,000,000	1 Available
Lecture Hall	\$500,000	1 Available
Faculty Suite	\$500,000	1 Available
Simulation/Skills Lab	\$350,000	2 Available
Classroom - Small	\$250,000	2 Available
Home Care/Apartment Suite	\$100,000	1 Available
Conference Room - Large	\$100,000	1 Available
Debriefing Suite	\$75,000	1 Available
Computer Lab/Testing Room	\$75,000	2 Available
Conference Room - Small	\$35,000	1 Available
Office - Chair	\$30,000	1 Available
Exam Rooms.....	\$25,000	6 Available
Archival Display Cases	\$25,000	3 Available
Office - Director	\$25,000	2 Available
Standardized Patient Green Rooms	\$15,000	2 Available
Office - Faculty	\$10,000	25 Available



BENEFACTOR LEGACY WALL

The Legacy Wall will be located near the entrance to the Dixon Campus, and will prominently highlight the names of our benefactors in a sophisticated display that communicates the impact of these founding gifts.

MAIN CONCOURSE - \$1,000,000

At 128 feet-long, the Main Concourse is the central thoroughfare of the campus, promising to be a hub for student interaction. With a bright, modern interior and access to each part of the building, this area will be a high-traffic collaboration zone, connecting students and faculty alike.



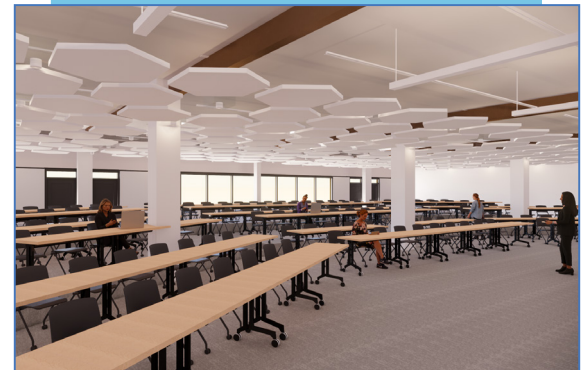
SIMULATION CENTER - \$1,000,000

This state-of-the-art facility will incorporate standardized patients, human patient simulation, virtual reality, task trainers, and computerized simulation. Occupying nearly one-third of the new academic campus space, the Center is where students will engage in complex clinical scenarios that parallel, anticipate, and amplify real-life situations. The Simulation Center features a large, open collaboration area for students to gather before they engage in simulated learning.



LECTURE HALL - \$500,000

This 200-seat tiered lecture hall will support the latest innovations in academic instruction, while creating a comfortable and engaging atmosphere for presentations, workshops, lectures, and guest speakers. This space will support a range of educational offerings, with adaptable, fully integrated technology for 21st century medical education.



Additional Opportunities

Founding gifts toward the Dixon Campus will help establish an endowment fund to enhance academic programming by keeping pace with academic technology trends and by performing ongoing maintenance of campus facilities and its archives, benefitting students for years to come. These recognition opportunities include:

FACULTY SUITE - \$500,000

This area will comprise the 27 faculty offices, areas for faculty collaboration/huddling, administrative kiosks, faculty dining space, and conference rooms. The suite will be the central hub for faculty to develop lessons, meet students, carry out administrative needs, and power the campus' instructional innovations.



SIMULATION/SKILLS LAB (2) - \$350,000

These 8-bed acute/critical care areas will feature a central control room containing one way mirrors and video monitoring capabilities to give students the critical feedback they need to learn how best to serve at patients' bedsides.



CLASSROOM - SMALL (2) - \$250,000

With 80-seat capacity, and the technology to support the latest innovations in teaching and learning, the classroom will be the central locus for learning on campus.



HOME CARE/APARTMENT SUITE - \$100,000

Home care nursing instruction requires specialized facilities to ensure students receive the hands-on simulation training they need to learn the standards of caring for a patient in their home. This apartment suite will be a private, community-based dwelling with one-way mirrors and video monitoring capabilities to give nursing students valuable experience in this important nursing field.





CONFERENCE ROOM - LARGE - \$100,000

Jefferson Nursing has a diverse and forward-thinking approach to curriculum design that promotes student engagement and creativity at the highest level. By including a large conference room on our new campus, we will be able to hold classes, lectures, and presentations in a smaller class size of 25-35 people, or use the space for extra-curricular programs, workshops, and events.



DEBRIEFING SUITE - \$75,000

As an essential part of our virtual reality and health care simulation curricula, our students and faculty will have access to a large debriefing suite featuring two debrief rooms with video monitoring capabilities and two conference rooms for standardized patient briefs/preparation and faculty consultation. This space will ensure students get the hands-on experience working closely with patients while under the constructive supervision of our esteemed faculty.



COMPUTER LAB/TESTING ROOMS (2)- \$75,000

These 40-seat classrooms will be equipped with a desktop computer at each seat, ensuring our students have access to online learning modules, testing materials, and computerized benchmark assessments. The two labs/testing rooms will be situated next to one another, and are designed to open into one large 80-seat classroom to accommodate larger classes.



ARCHIVE DISPLAY CASE (3) - \$25,000

These archival cases will share our incredible collection of artifacts that highlight the history of nursing, the Jefferson legacy, and the breadth and depth of the accomplishments of the Abington Dixon School of Nursing. To the left, dolls display diploma nurse uniforms throughout the years, including some of the uniforms that would have been worn by early Abington diploma nurses. Items like this, and more, will be showcased in these cases prominently featured on campus.



EXAM ROOMS (6) - \$25,000

If a quality nursing education is the foundation for a nursing career, personal experience with patients is the capstone. These exam rooms will be fully-outfitted with the equipment nursing students need to learn the tools of the trade and conduct standardized patient exams, while featuring the video monitoring capabilities that faculty need to help each student achieve the highest standard of care.

TO LEARN MORE,

CONTACT

Marie Ann Marino, EdD, RN, FAAN

Dean and Professor
Jefferson College of Nursing
215-503-3720
Marie.Marino@jefferson.edu

Jill Kyle, MBA, CFRE

Senior Vice President,
Regional Advancement
Office of Institutional Advancement
215-481-4977
Jill.Kyle@jefferson.edu

Colleen Morgan

Director of Development,
Thomas Jefferson University
Office of Institutional Advancement
215-503-2994
Colleen.Morgan@jefferson.edu

Office of Institutional Advancement
125 S. 9th Street, Suite 600
Philadelphia, PA 19107

Giving.Jefferson.edu